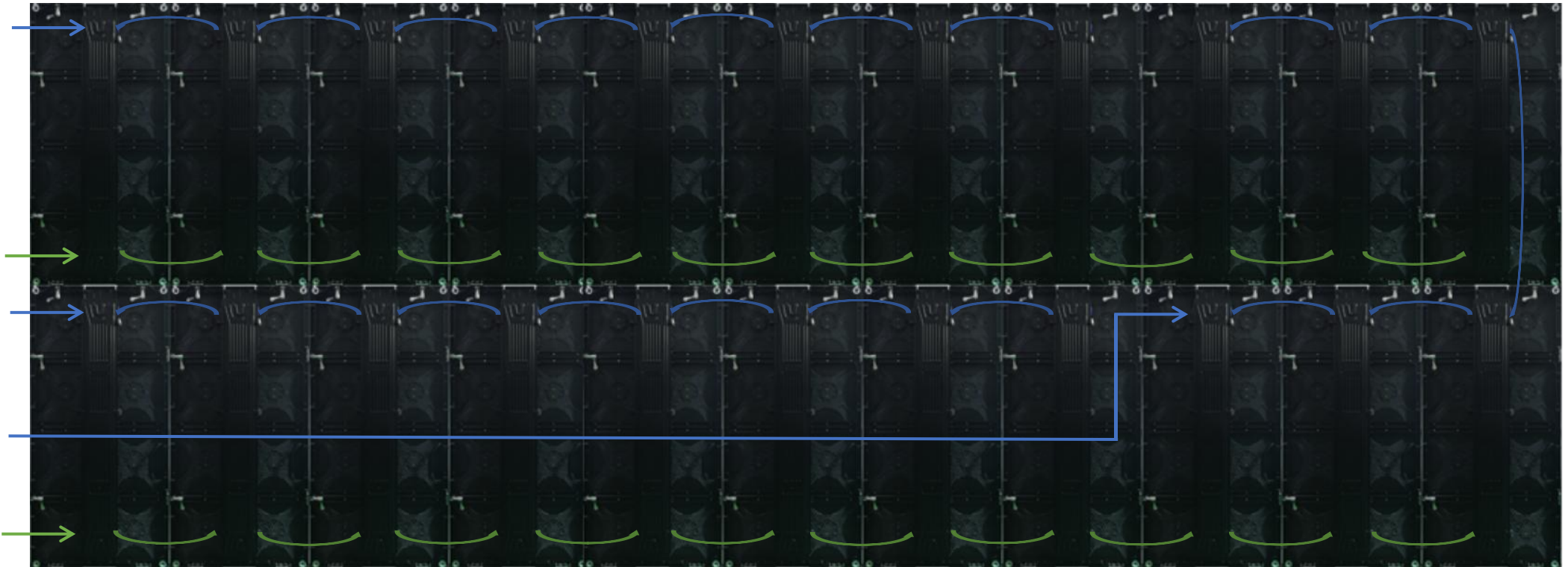
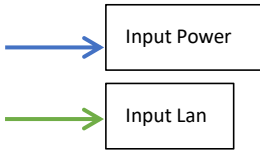


1. make panels wire connection as following picture shows.

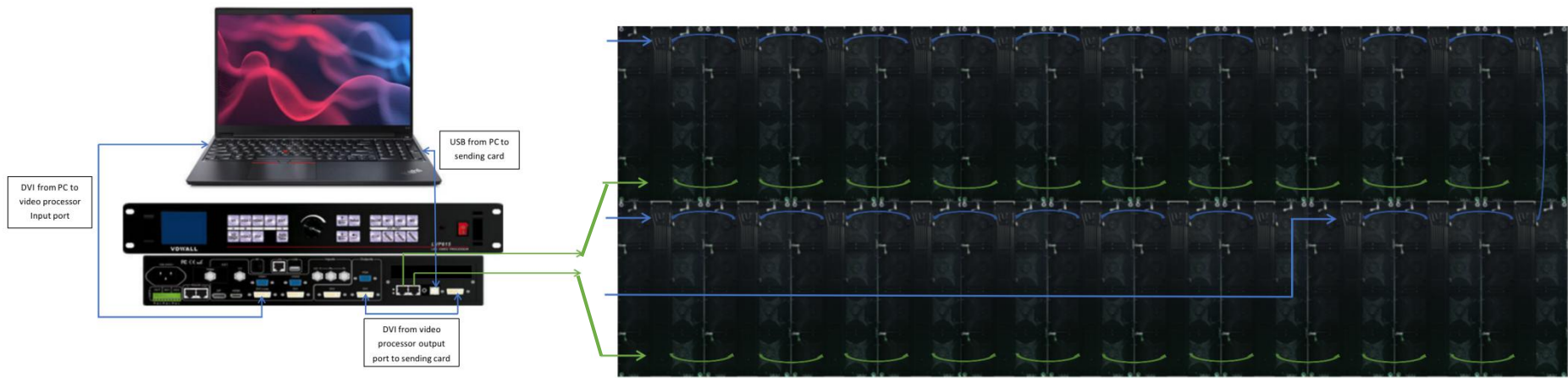
22 panels, total 3 input power cables, 2 input lan cables.



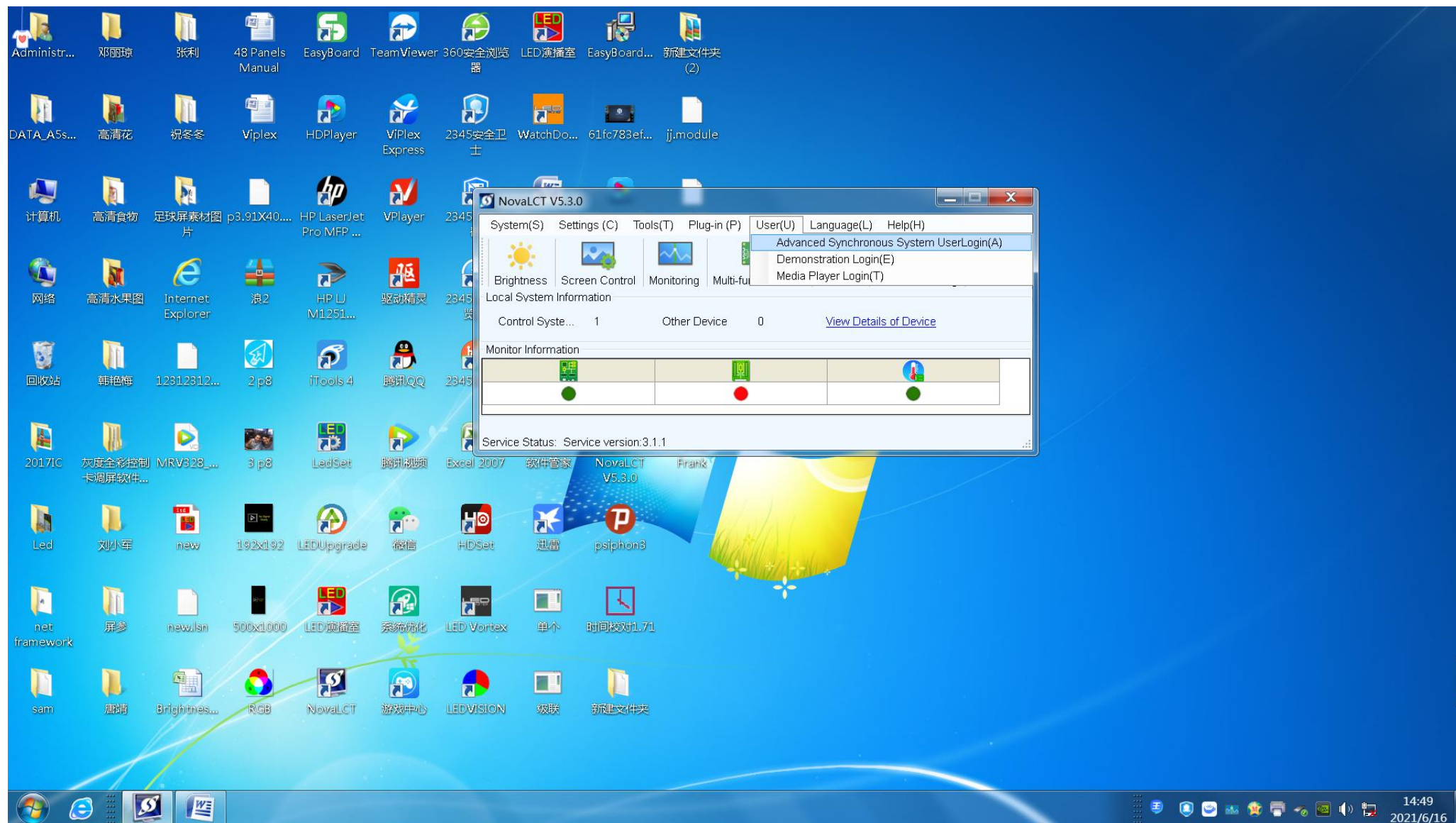
Video processor connection



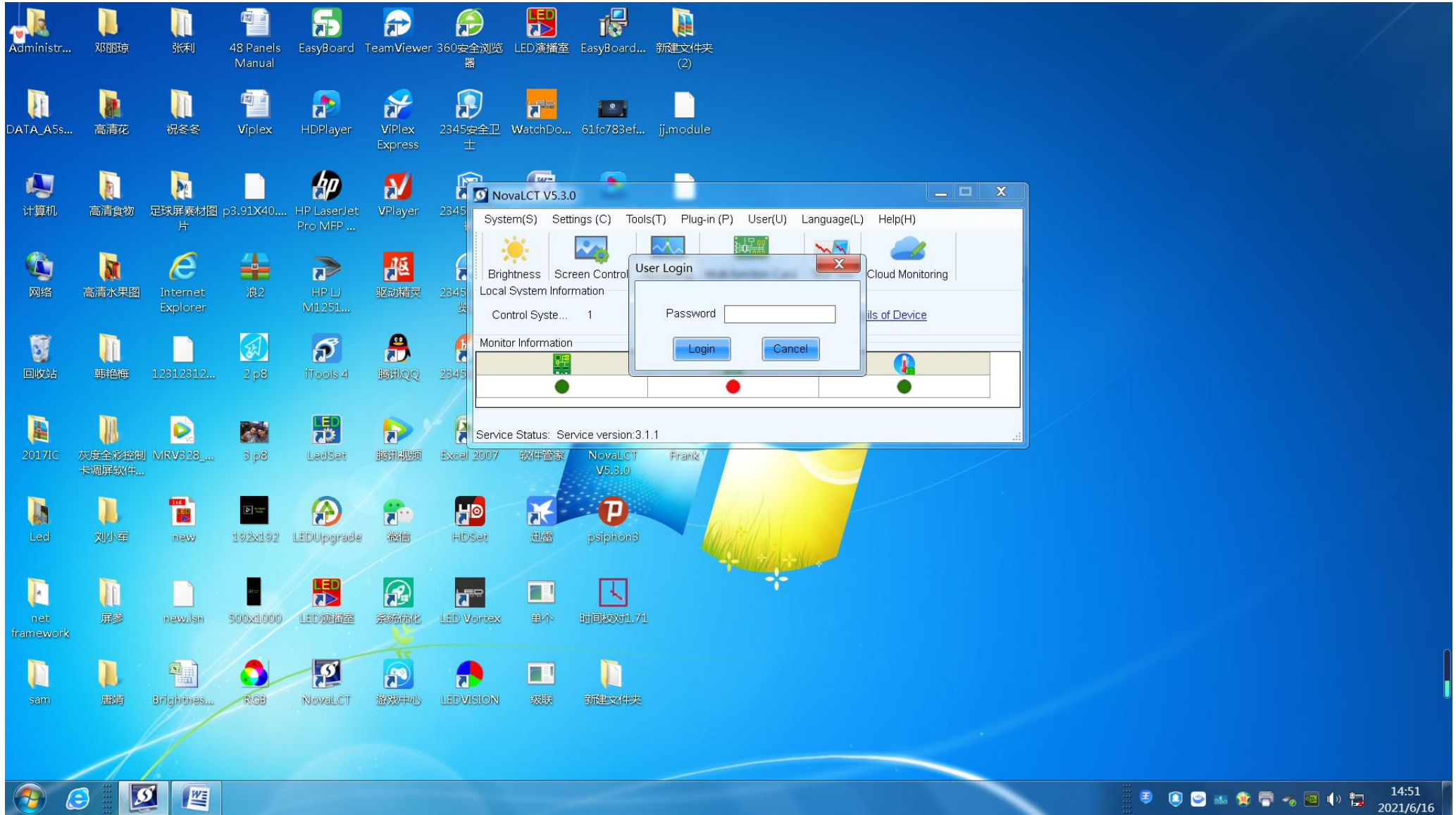
2. Make video processor input same to computer resolution, **outdoor same to screen resolution(1,408x512P)**



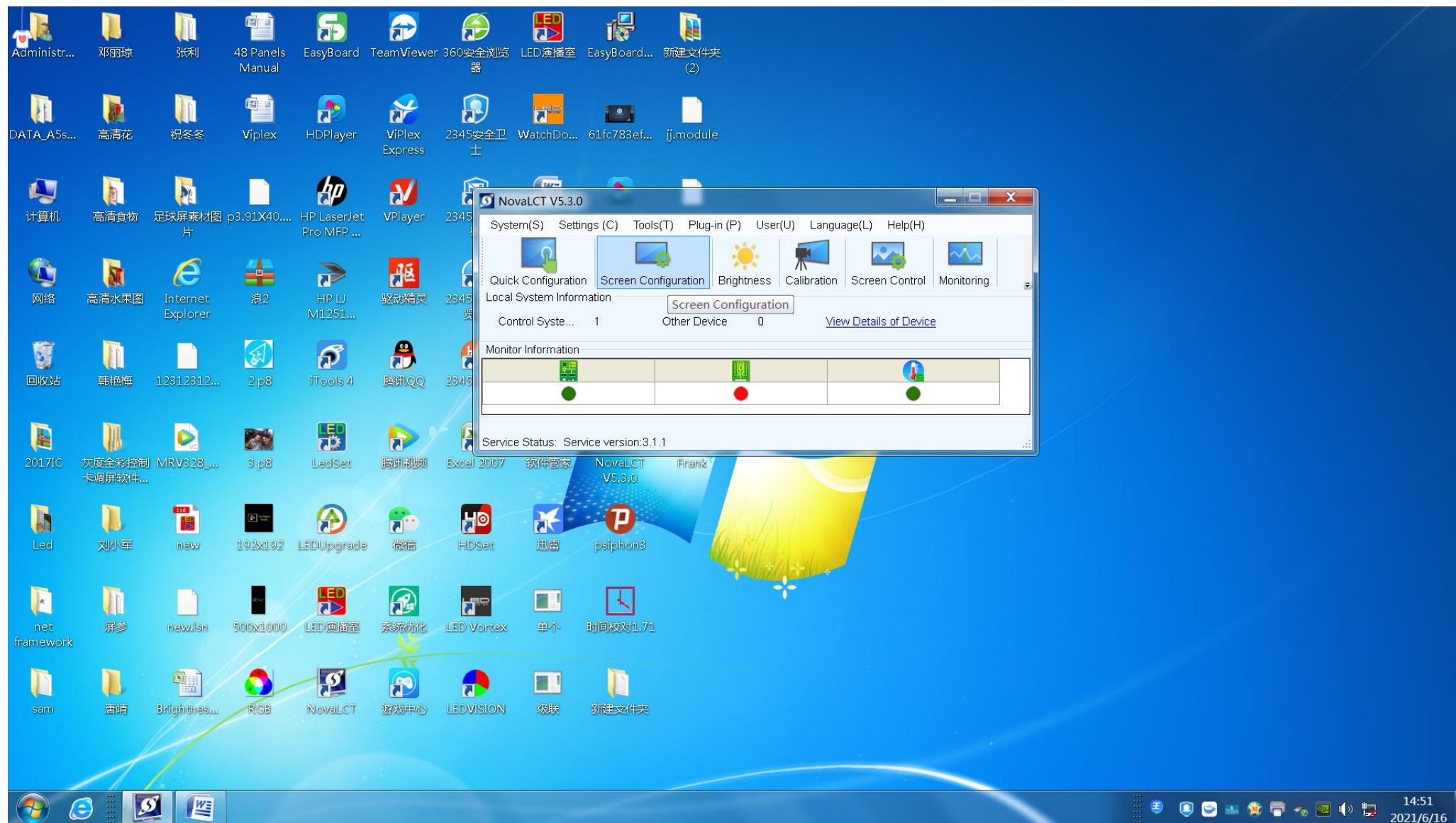
Open NovaLCT, click user and click advance syhchronous system userlogin.



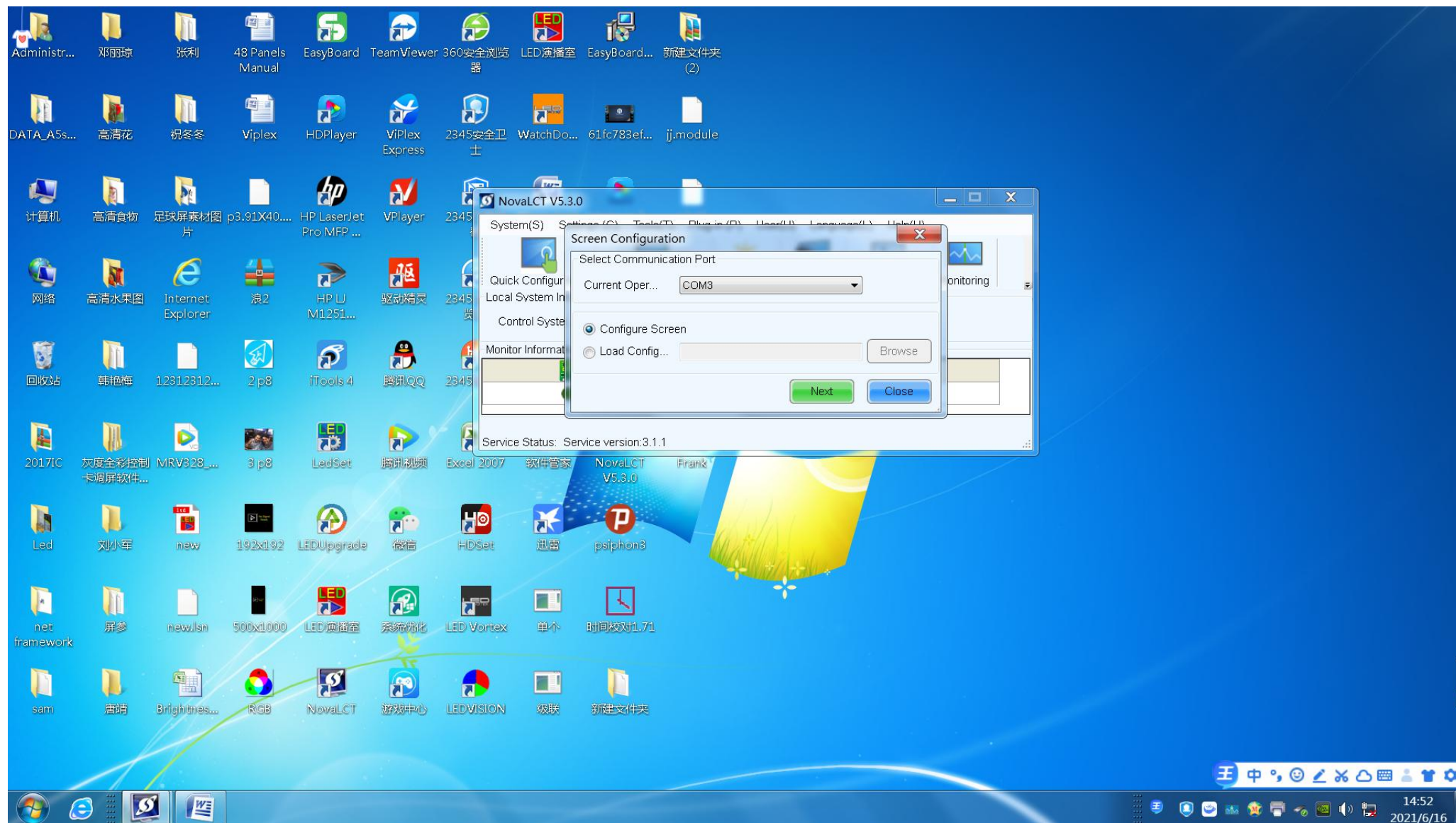
Input password 666



Then you will see screen configuration, click it.

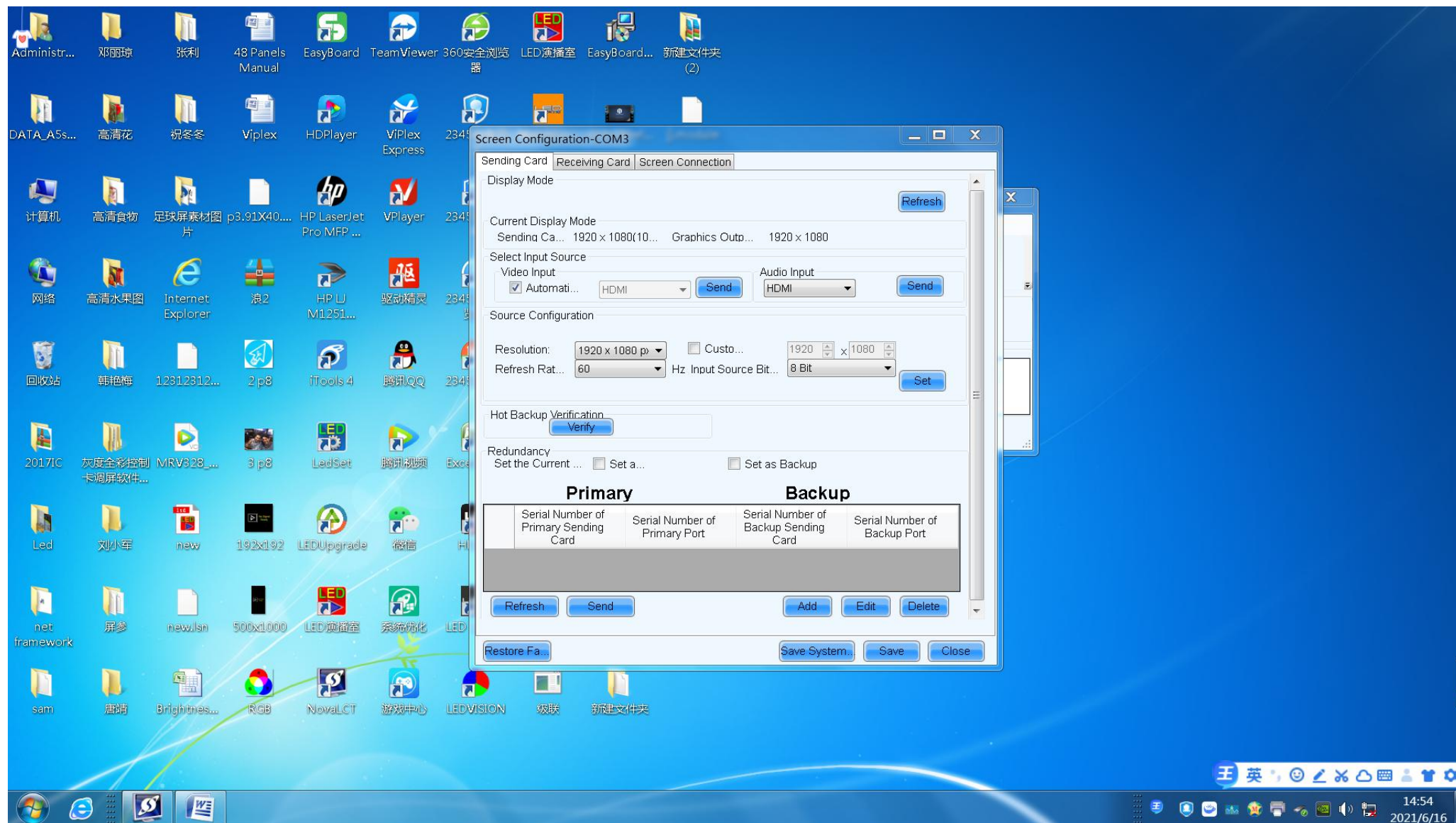


And you will see a window like it, then click next.

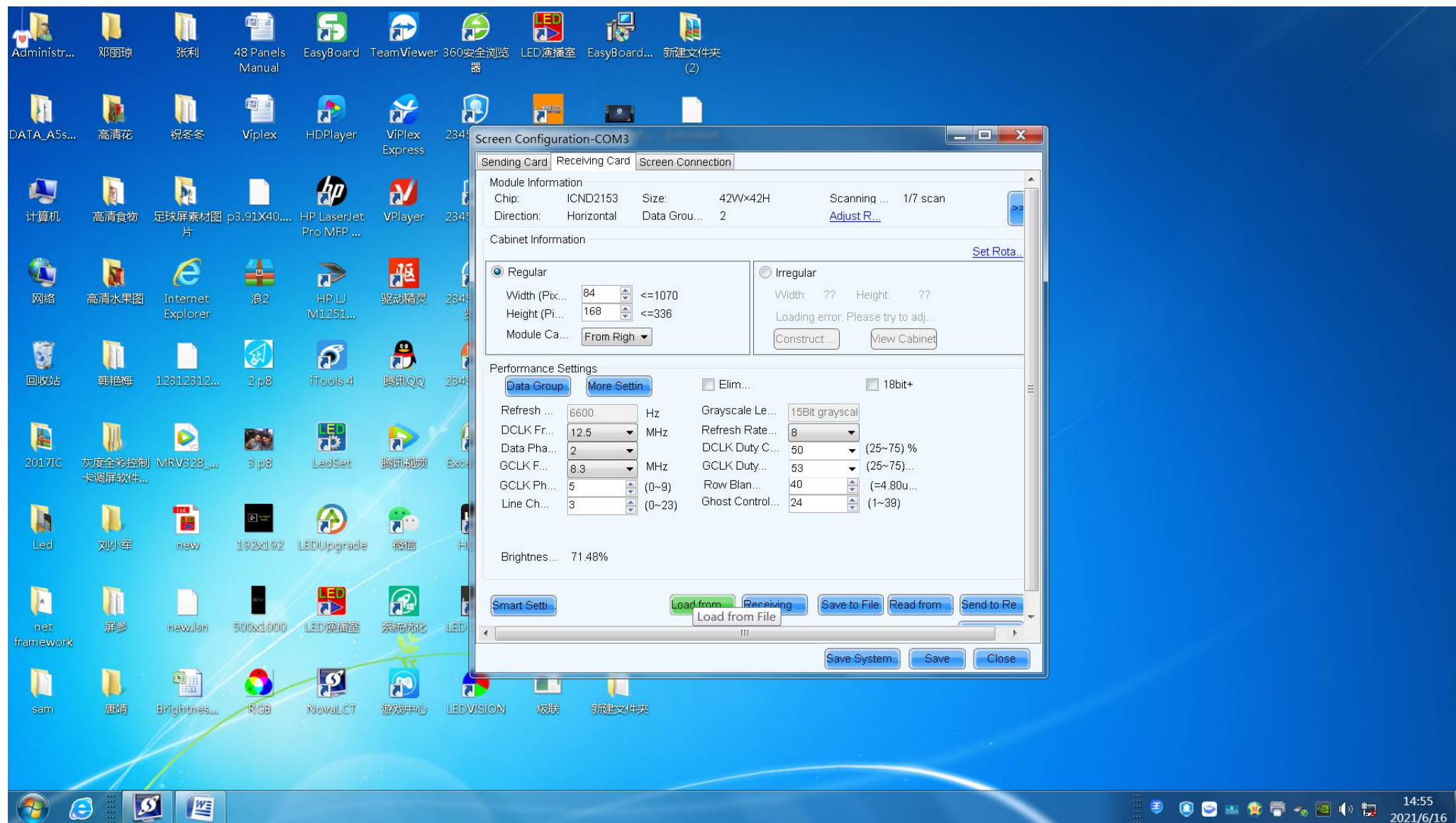


Then you will see screen configuration windows.

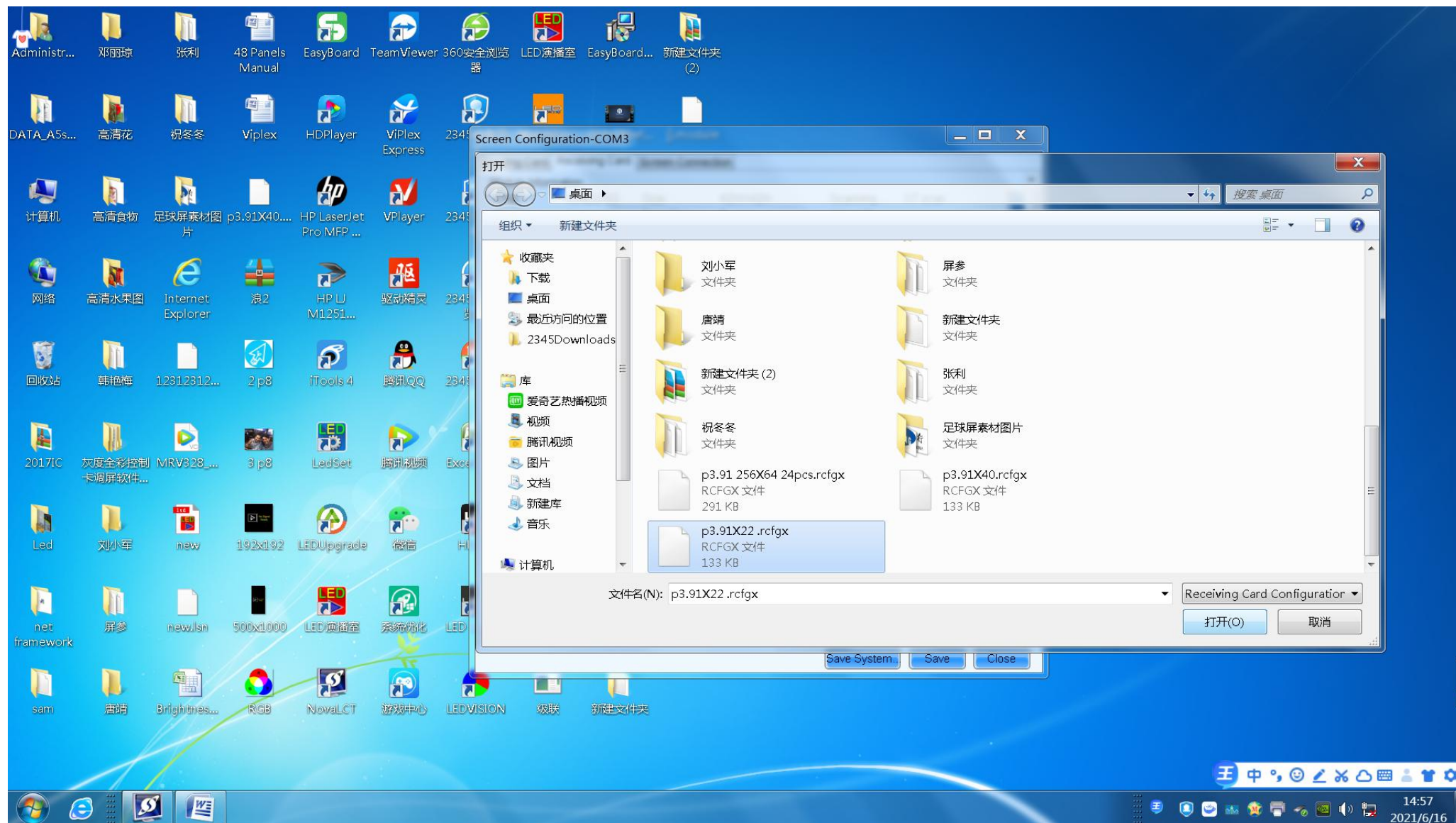
Make sure the sending card resolution same to source configuration. (normally is 1920x1080p)



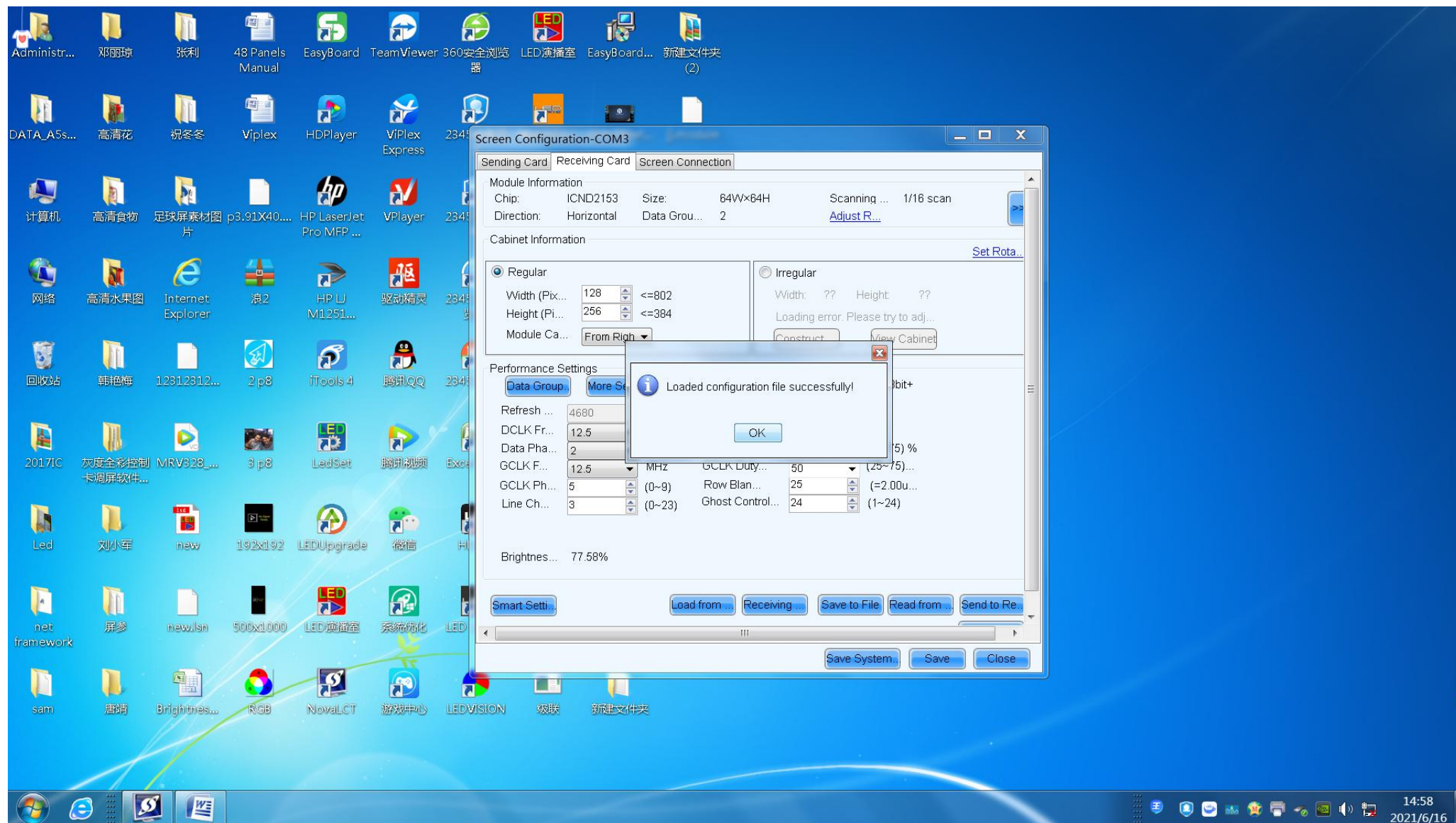
Click receiving card. And then click load from the file. (save the RCFGX file we sent you on desktop)



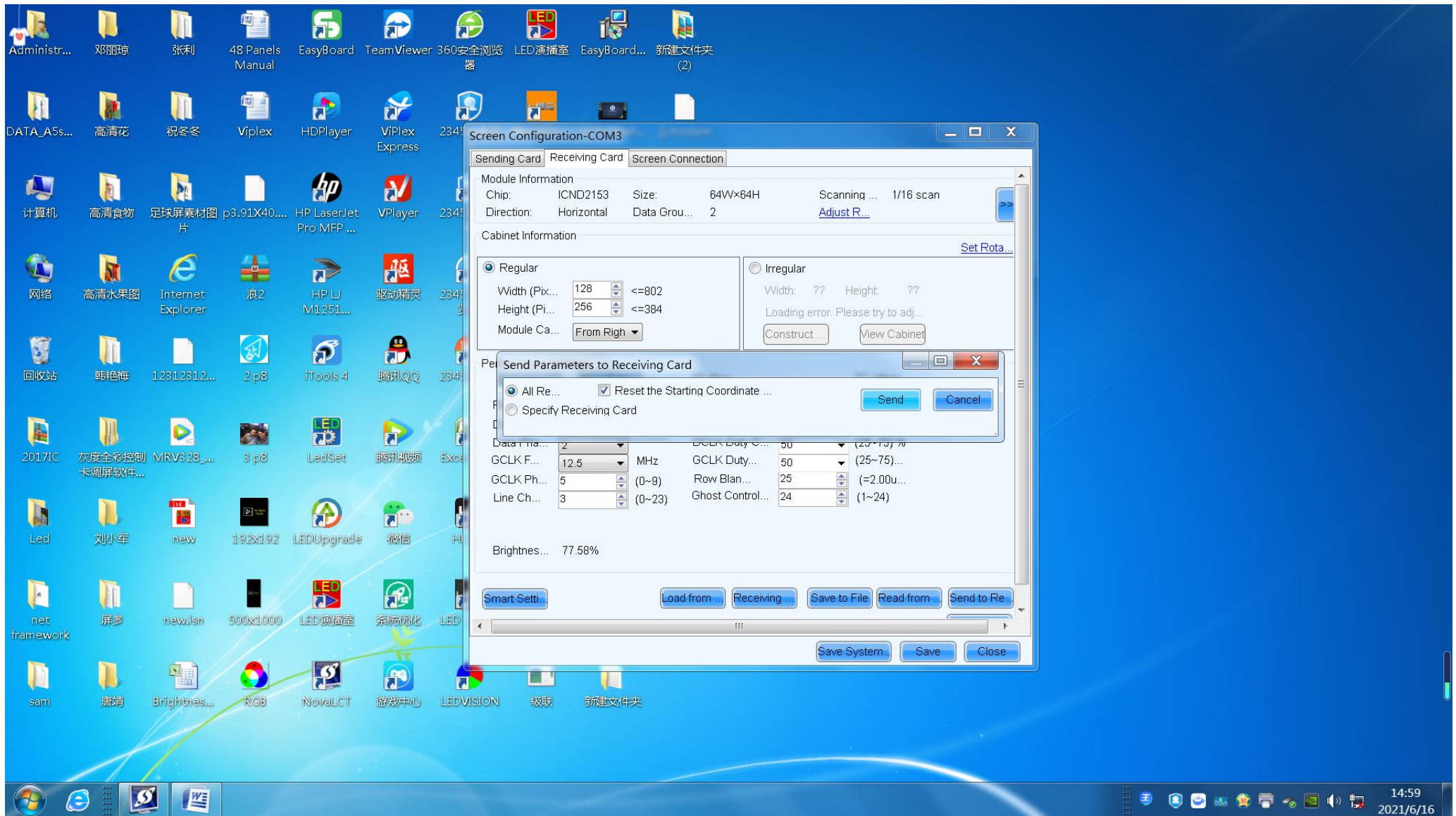
Find the file, then click open.



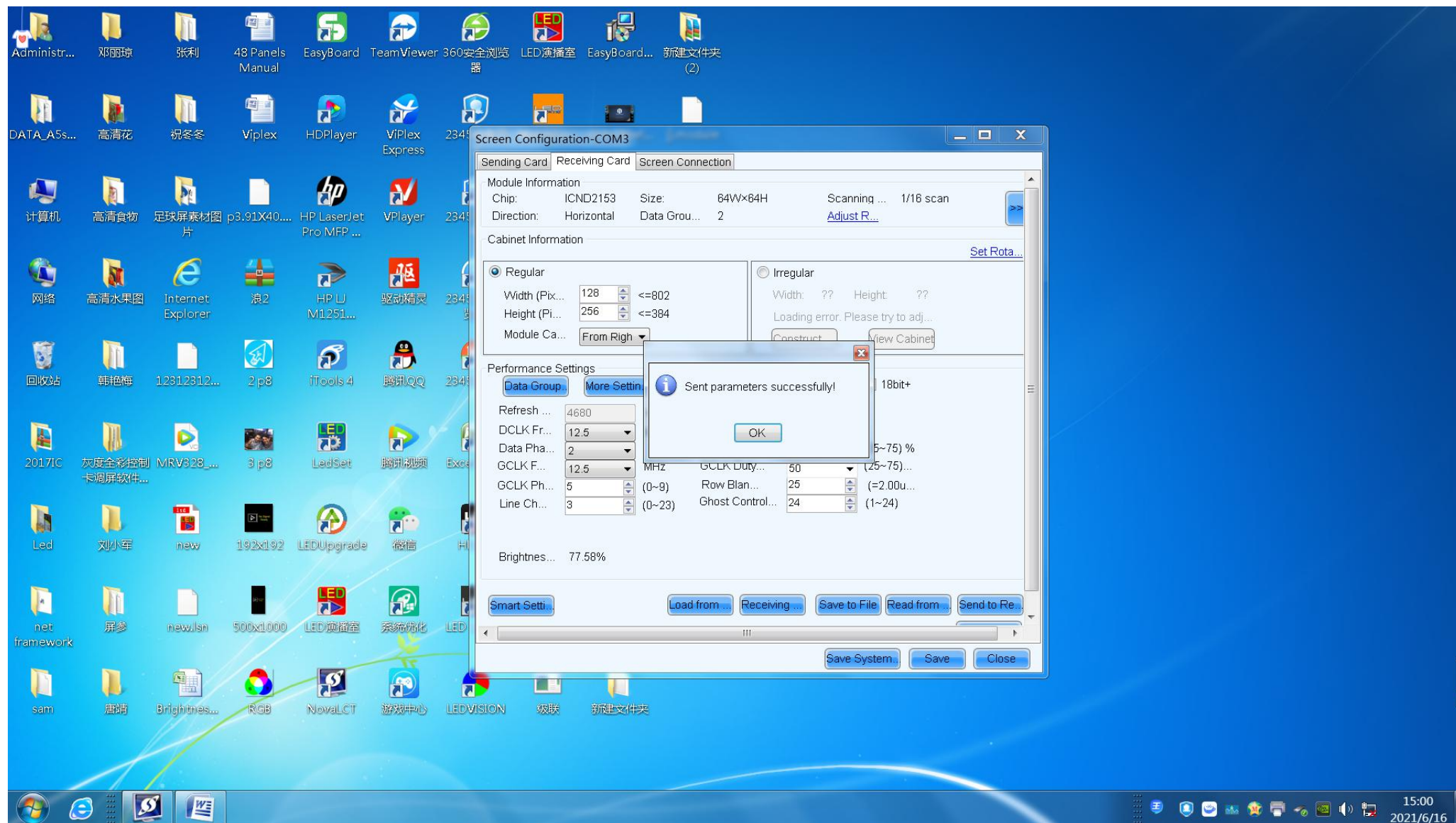
Then you can see load the file successfully, just click okay. After that



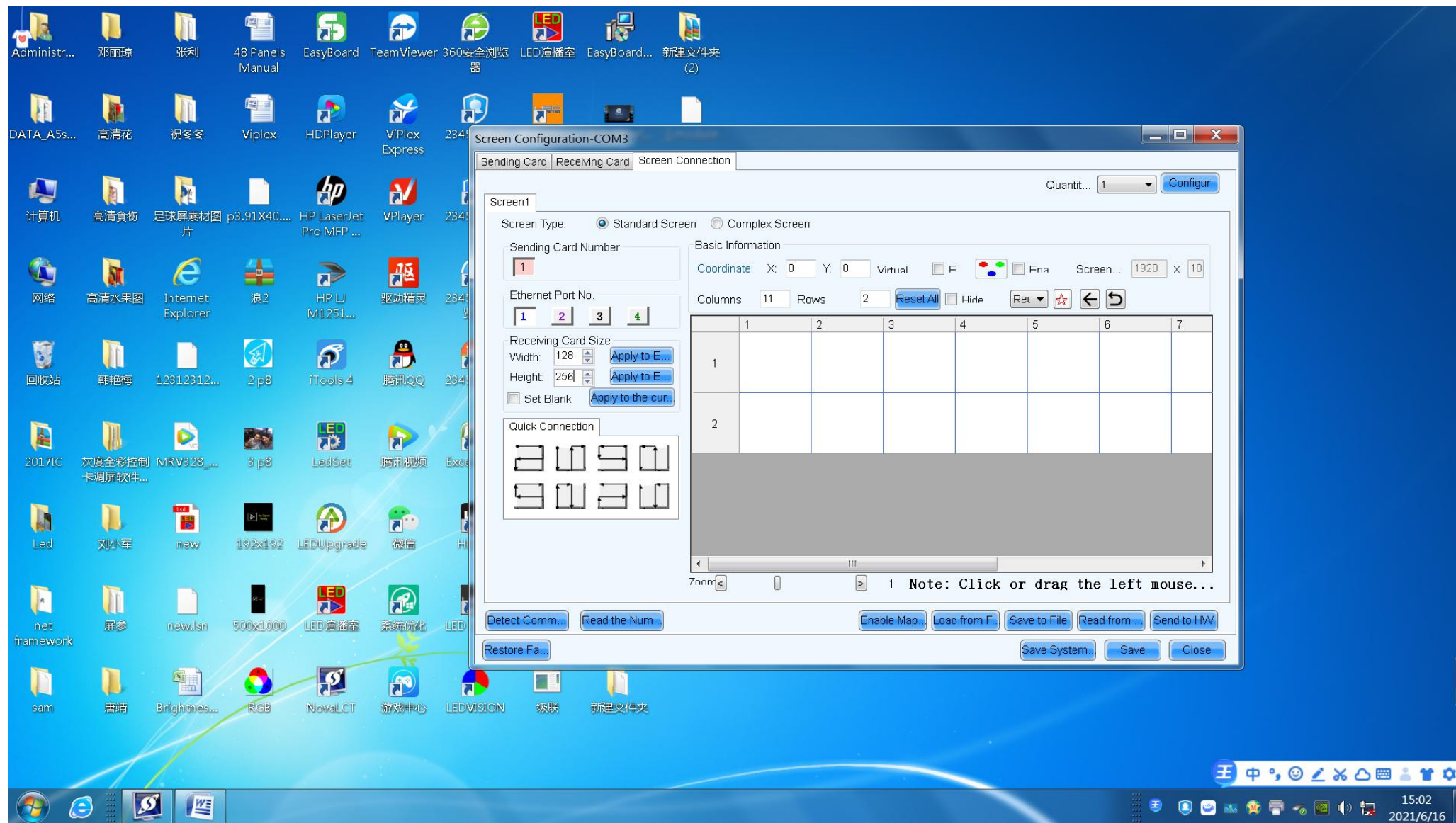
Then click send to receiver, you will see a window(send to parameters to receiving card), remember choose rest the starting coordinately



You will see the window like it. Then click okay and Save.



Now move to screen connection. Click configure first. Then you can set columns x rows at 11x2. Just like the panels installation you made.



Set the receiving card size at 128x256P. Then make mappings, like it. Remember it is front viewing. After that click sent to HW and save.

