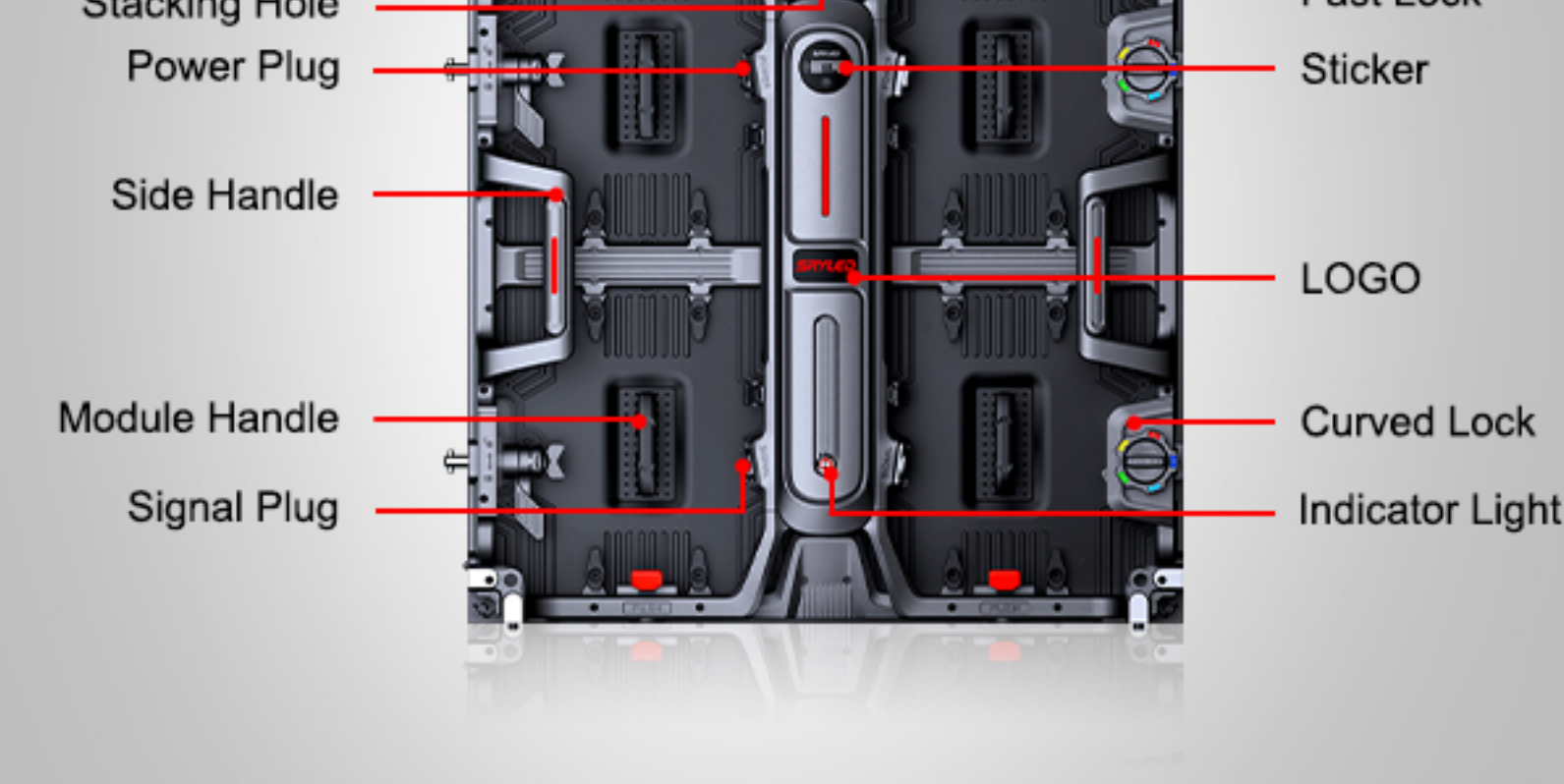
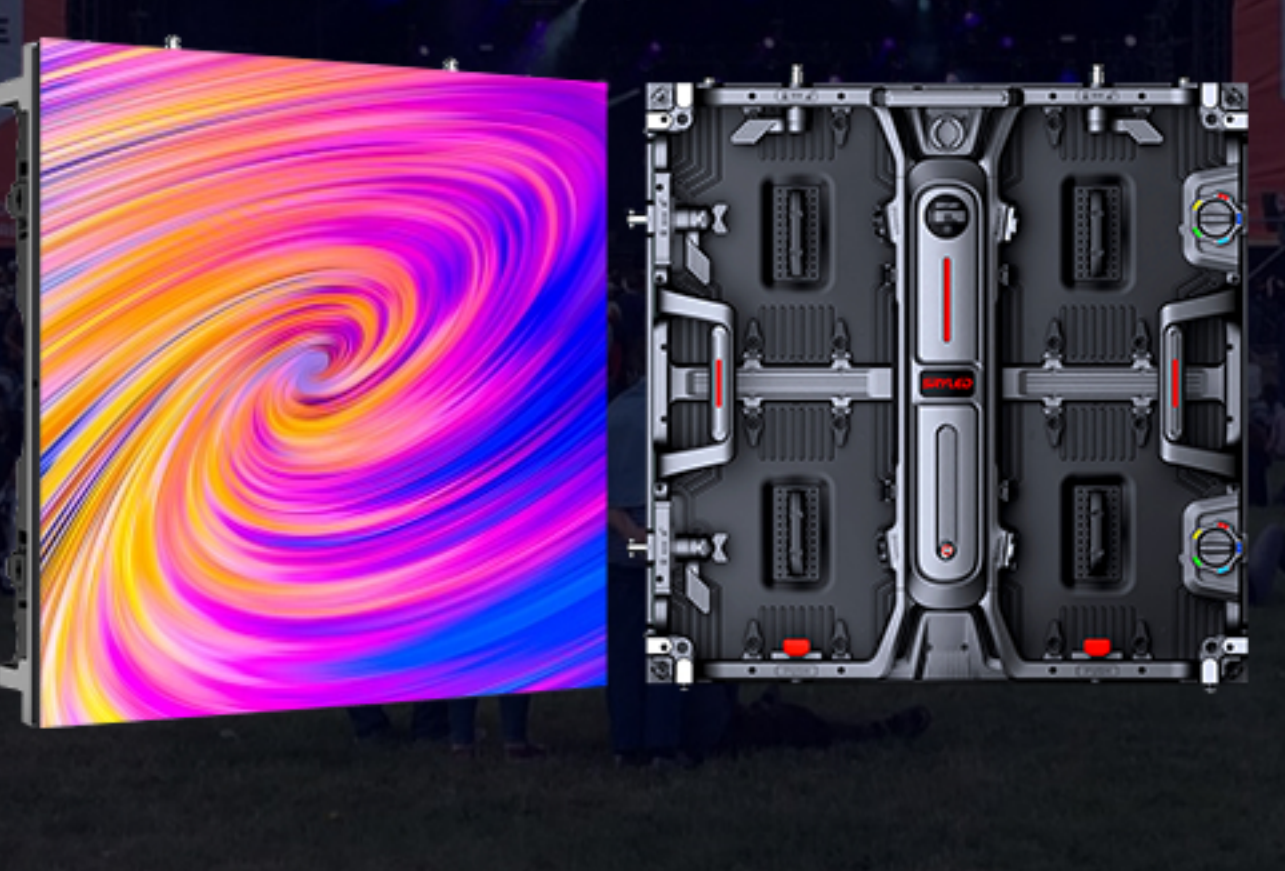


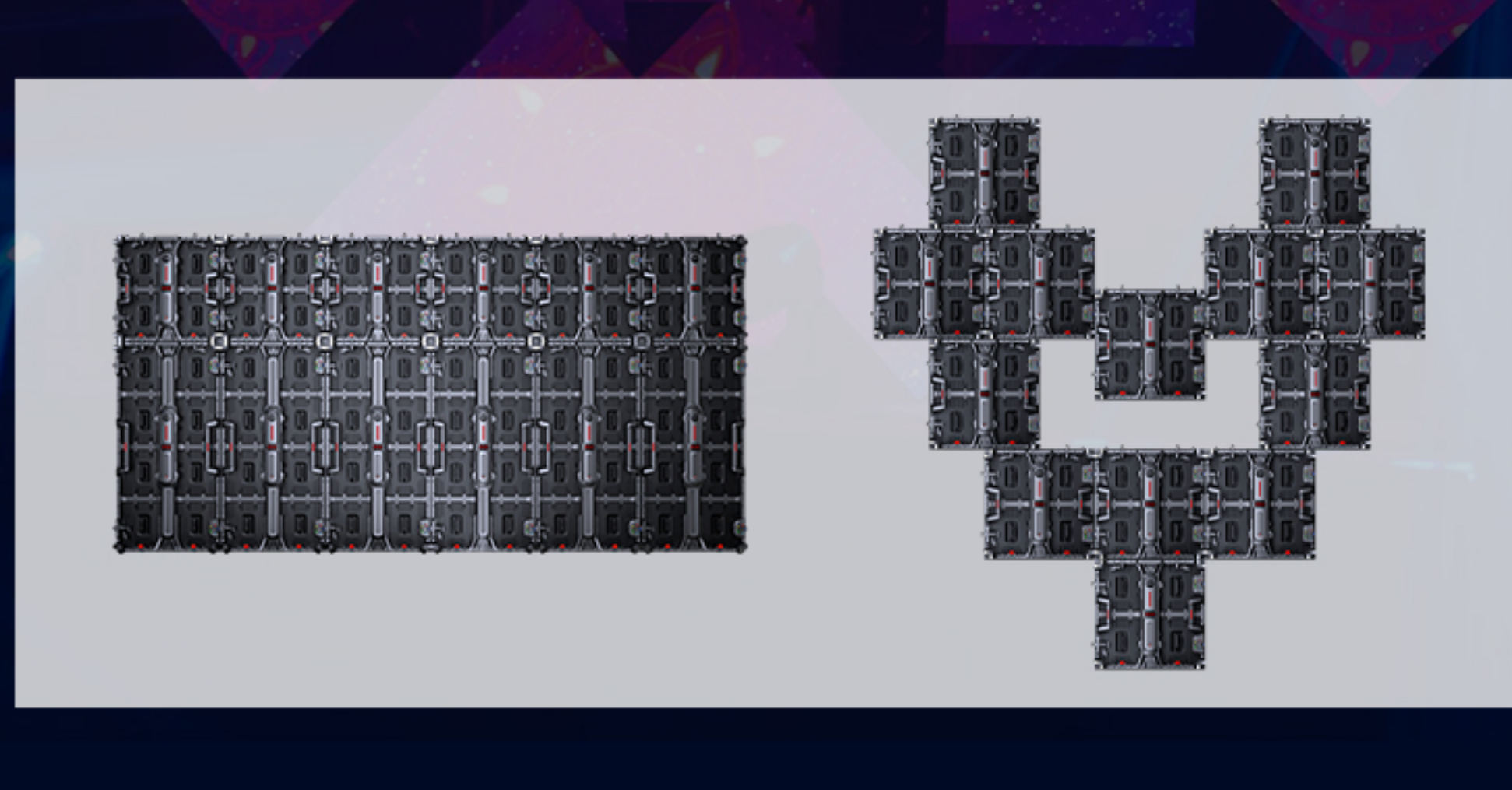
# R SERIES

Indoor & Outdoor Modular Event LED Display  
P1.9 / P2.6 / P2.97 / P3.9



## Seamless Splicing

500x500mm LED panels and 500x1000mm LED panels can be seamless spliced from top to bottom and from left to right.



## Support Curved Installation

R series LED video panel can make curved LED display, both inner and outer arc are supported, and 72pcs LED panels can make a circle.



## Front & Rear Access

Both front access and rear access are supported. It make installation and maintenance easier.

Front Maintenance

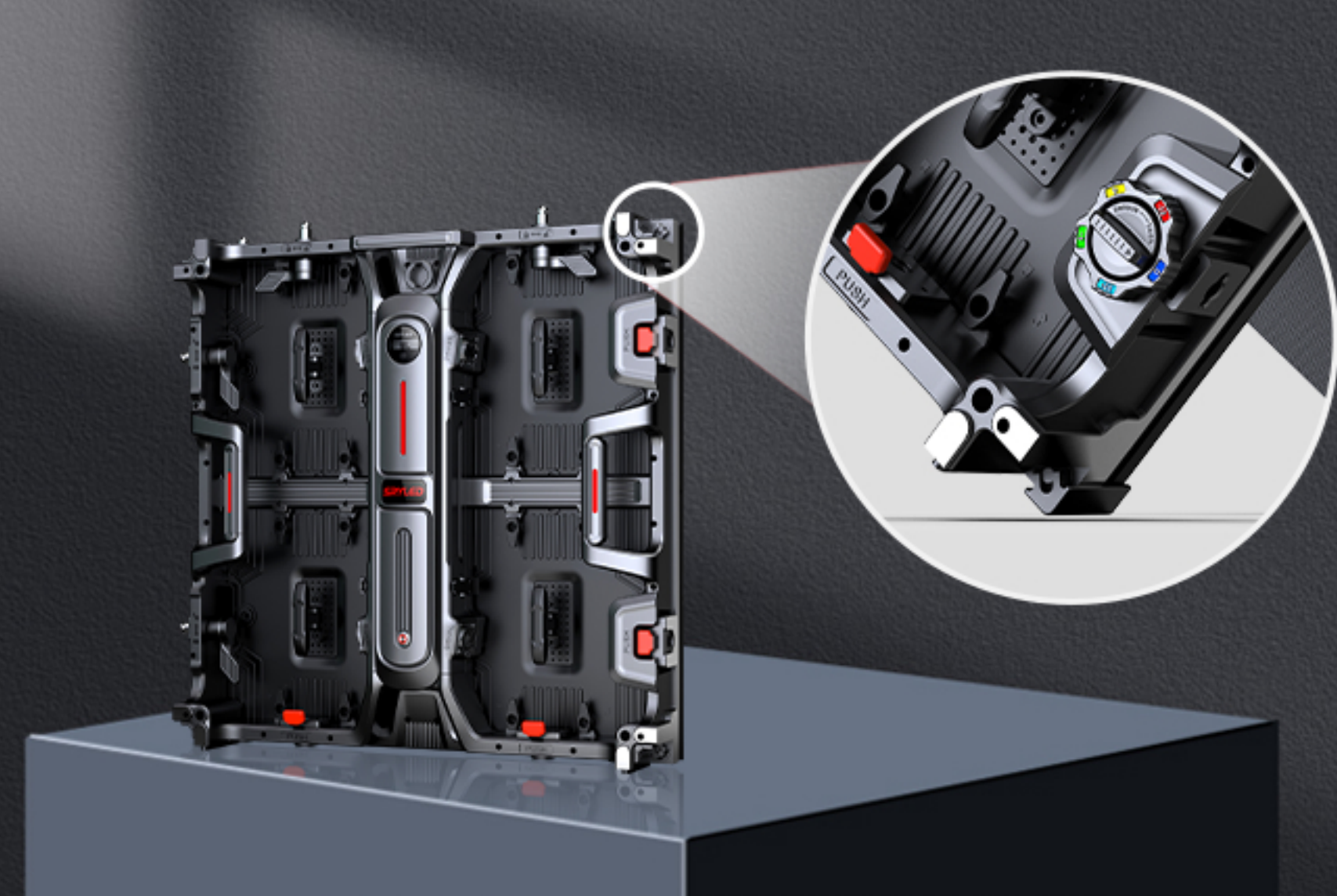


Rear Maintenance

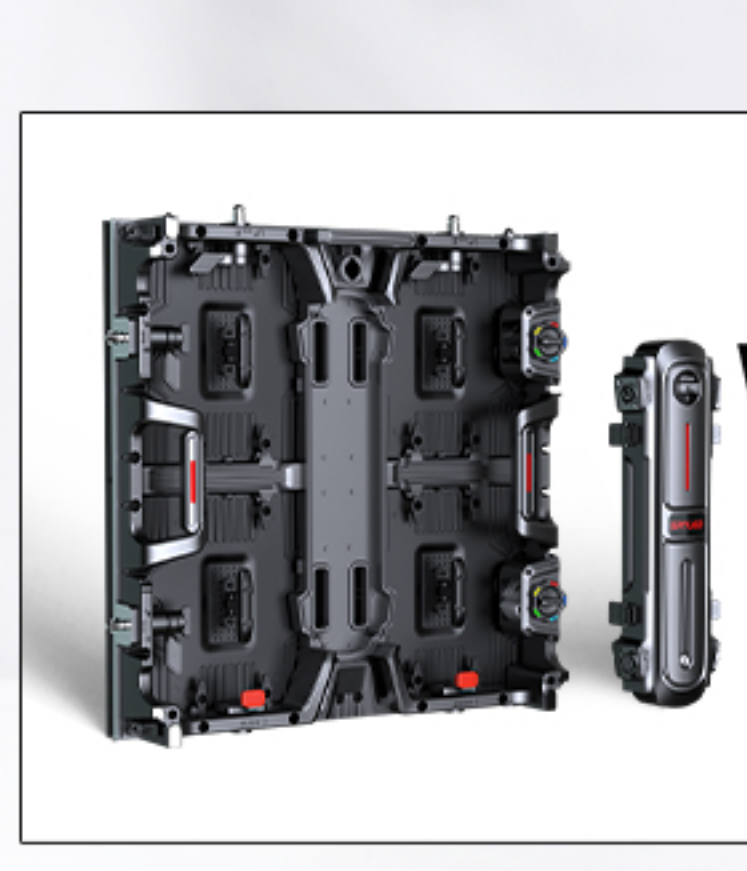


## Corner Protection

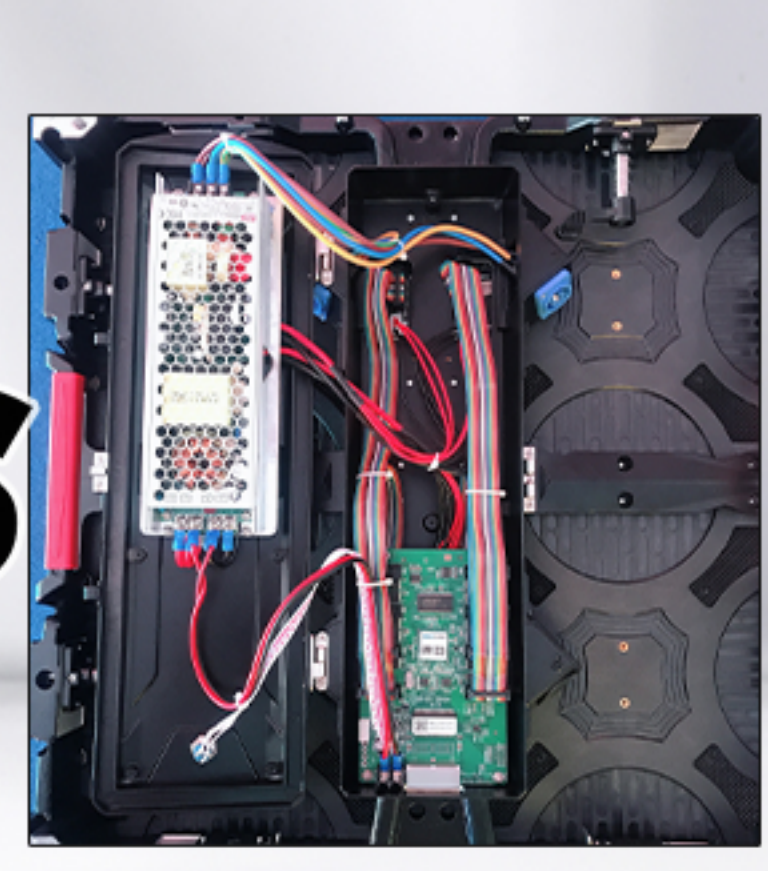
R series LED video panel has corner protection equipment, it can protect LED video wall not be damaged during assembly and transportation.



## Independent Power Box



VS



SRyled R series private model panel with independent power box, quick maintenance.

Other supplier public model panel, more difficult to maintain and assemble

## Light Weight & Thin

R series video panel is only 7KG/pc, and thickness is 84mm.



## Different Installation Way

Hanging and stacking installation are both available. Besides, it can also be installed on wall.

