



4G LED

TAXI TOP LED SIGN

Video, picture, text, flash and kinds of formats

Box Color options



Regular Color :
Black (0.0.0)

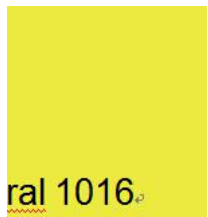
Customize color:

Traffic red (RAL3020)

Traffic grey A (RAL7042)

Traffic yellow (RAL1023)

Sulfur yellow (RAL1016)



ral 1016



ral 1023



ral 3020



black

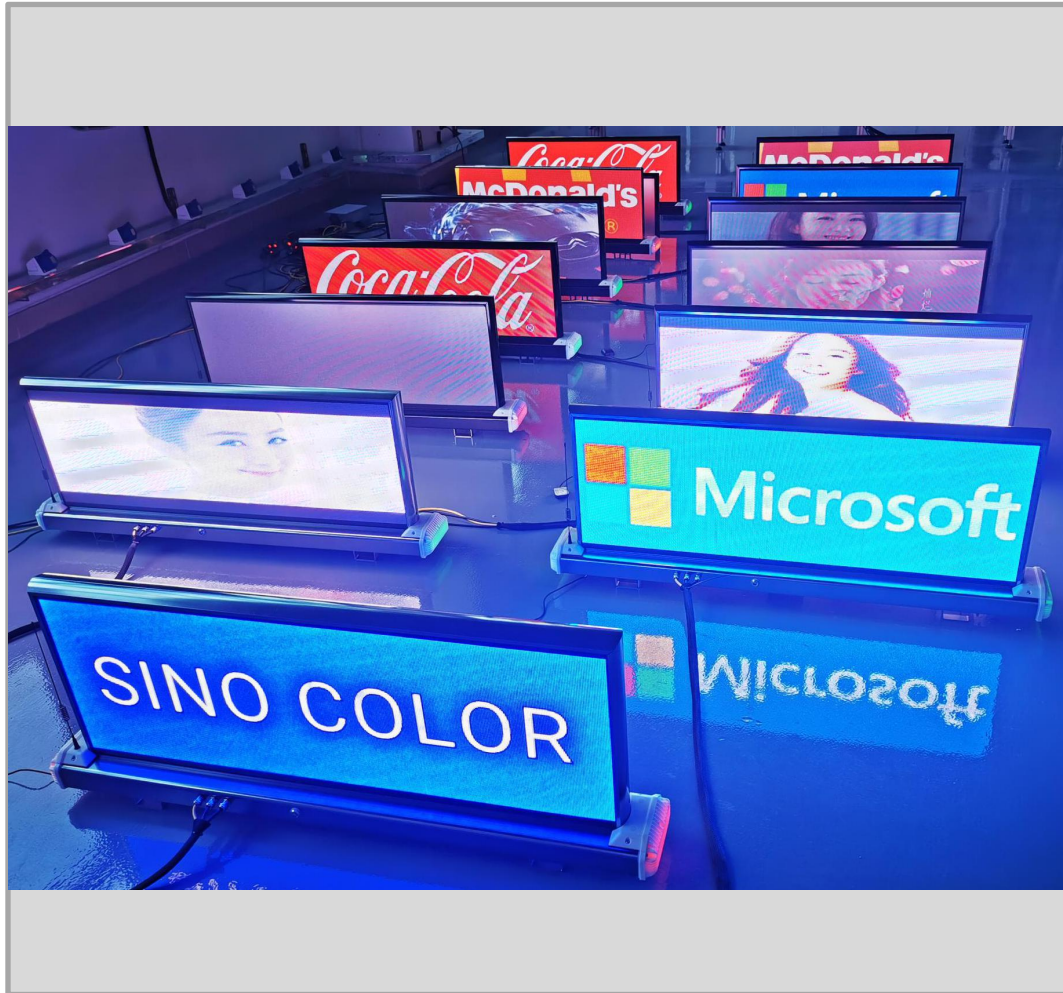


ral 7042

Notice for user

- 1, Confirm the top part of the car could support the weight of the sign.
- 2, Confirm the car battery is enough for the led sign,if not than add extra .
- 3, LED sign power is with $DC12V \pm 15\%$ and should check the positive and negative electrode.Yellow or red wire is positive and black is negative.
- 4, On and off
Turn on the swift,the power supply runs after 10 seconds and the controller works after 1 minute then the sign lights on(protect other equipments and assure the sign and car power system in safe condition) .Turn off the sign,the power will be cut after 2 minutes(protect the sign if the car flameout too often).
- 5, cover with PC material should not use sharp solid tool to scratchb.could use soft cloth to clean with detergent.
- 6, if need to change the control wire like backlight or switch way,should ask professional person to do it .

TAXI sign character



taxi top sign is for outdoor solution with slim and beautiful aluminum and pc case. Base on the car power system and wind resistance, it will not damage the car or block the wind in heavy condition. With high brightness but low power consumption, it will be useful for bring more ads. The structure is easy to maintain and fast to check any problem. It will be with 2-4 years warranty according to the car request.

Advantages



- 1, Low power consumption with high brightness.
- 2, Patent structure design, aluminum case with oxidation treatment, coating film for anti-ultraviolet, outdoor painting for anti-rusting and anti-aging
- 3, High transparent pc cover that not turning yellow color or old in 10 years
- 4, Patent design with high level powersupply, beyond voltage, current load, short circuit will be protected. Also with delay swith function. Work in $-40^{\circ}\text{C} \sim +70^{\circ}\text{C}$ environment.
- 5, Web control and could manage in anytime and any location through web browser. No need for download software
- 6, with easy installtion bracket
- 7, Fast maintenance structure
- 8, Custimize with different pixel pitch

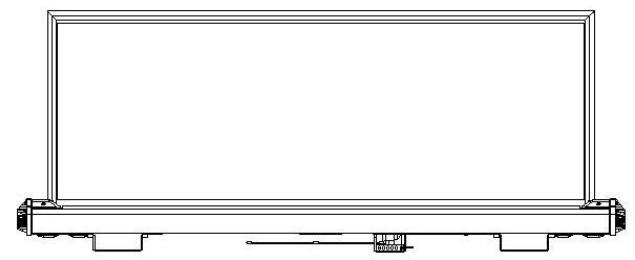
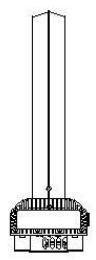
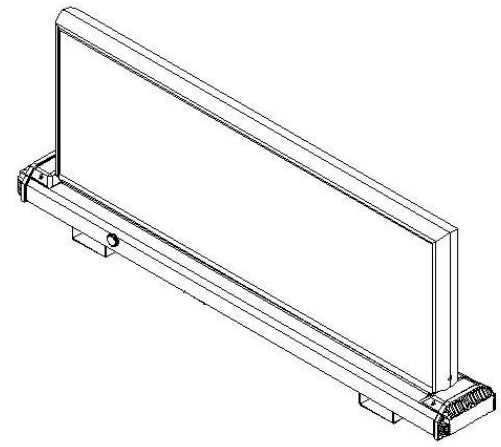
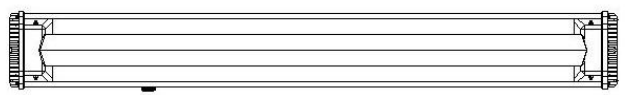
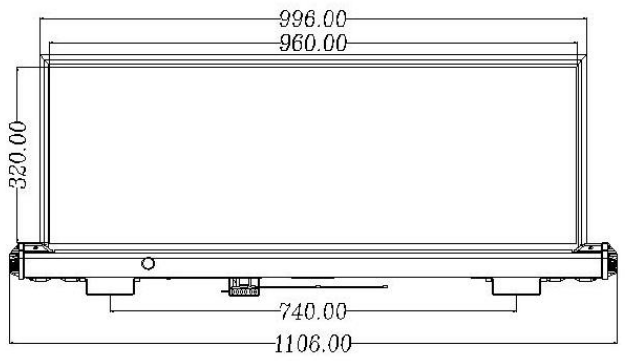
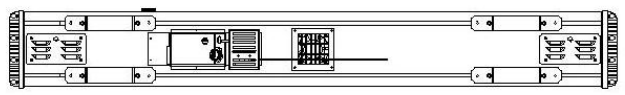
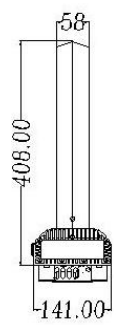


Data sheet

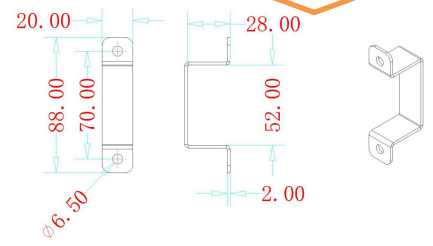
Screen Model	T-P2.5R	T-P3.3R	T-P5R
Pixel Pitch	2.5mm	3.3mm	5mm
Visual size	960mm x320mm		
Size	1106mm x 408mmx141mm		
Weight	15KG/PCS	15KG/PCS	15KG/PCS
Resolution	384 x 128 Dots	288 x 96Dots	192 x 64 Dots
Max. Power Consumption	350~420W/m ²	350~380W/m ²	320~350W/m ²
Brightness	(4300~5000CD/m ²)	(4300~5000CD/m ²)	(4300~5000CD/m ²)
Refreshing Frequency	5100 Hz	5100 Hz	5100 Hz

Note: cabinet weight,brightness,power and refresh rate will be changed a bit in different orders and lots.Display size could be customized.

Sign size

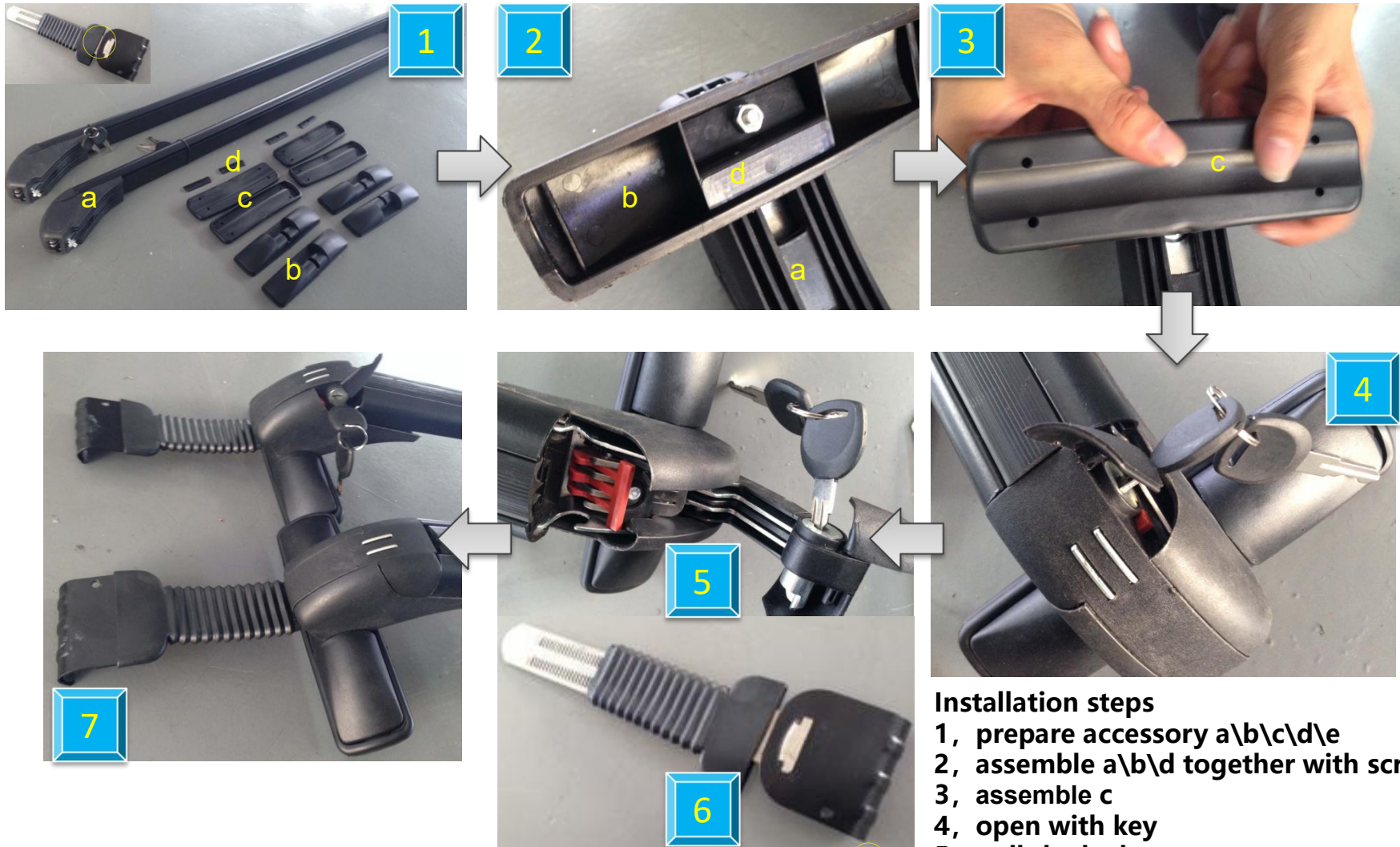


Small car and SUV
mounting parts
size different



Note: here is standard size, special installation way should follow the car size.

Bracket installation

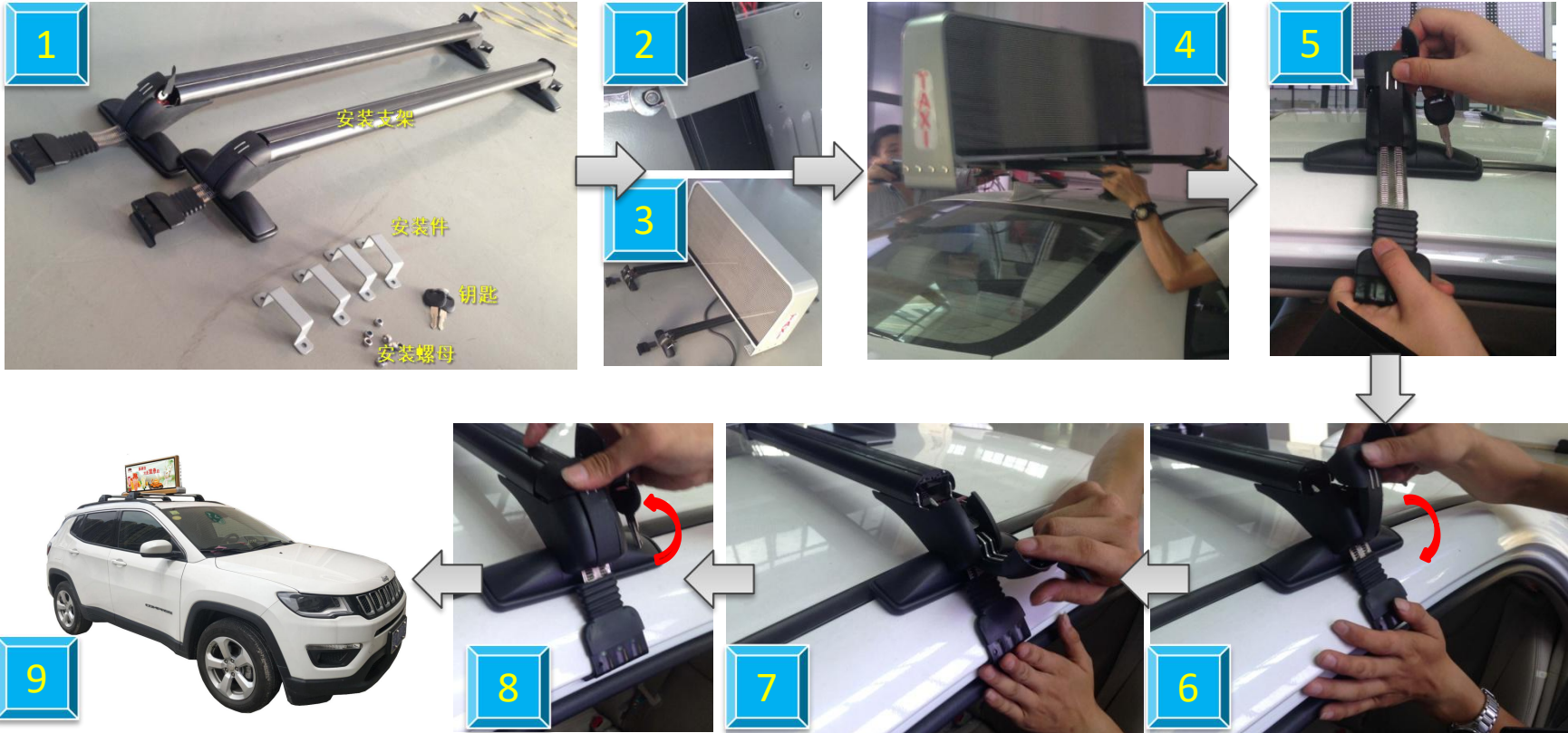


Installation steps

- 1, prepare accessory a\b\c\d\e
- 2, assemble a\b\d together with screws
- 3, assemble c
- 4, open with key
- 5, pull the lock
- 6, insert e
- 7, ready

Sign installation

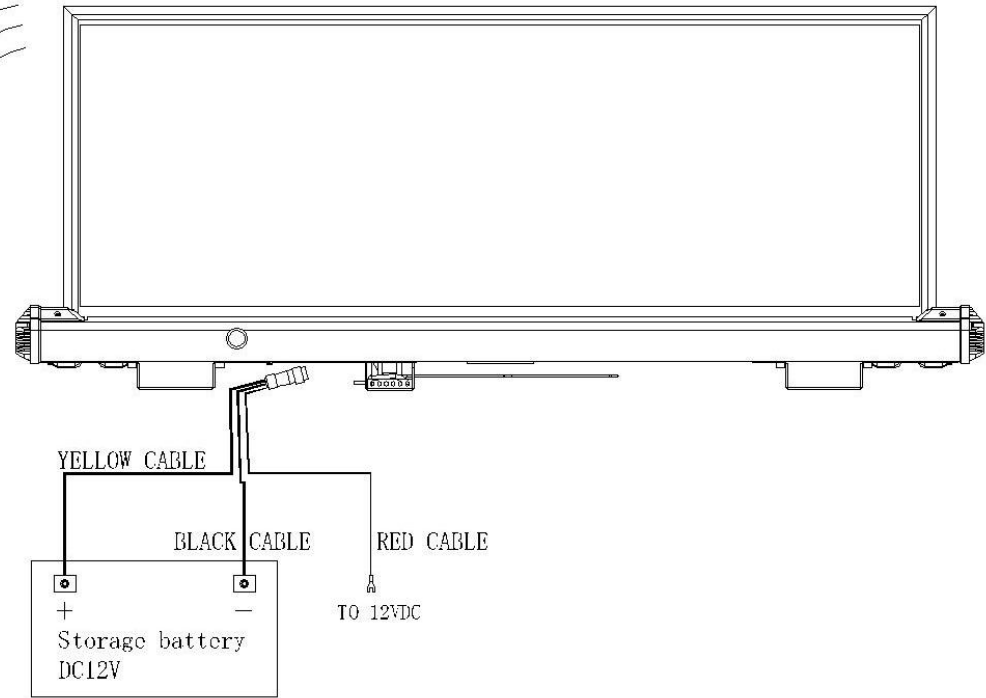
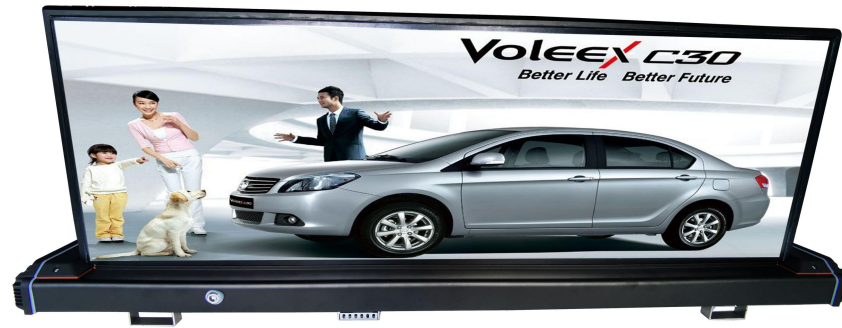
Note: Each type of vehicle has different mounting racks. Different lengths of mounting racks can be selected according to the type to be installed. The corresponding installation method can be designed according to different types of vehicles.



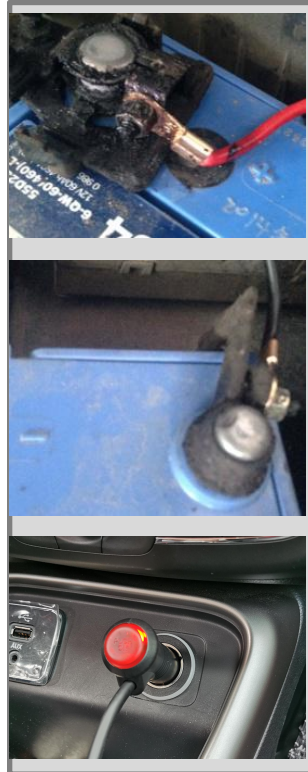
- 1,install bracket,base ,screws and key
- 2, 3,install the screen at the central part of the bracket and make it tight
- 4, put at the top
- 5, use the key to open the lock,pull the lock hook to the dent park of the side
- 6 7 8, pull up and down to make it tight for the hook
- 9, turn on the sign after installation

Connection Map

WiFi 4G GPS



connection schematic diagram



Main cable connect with car battery and control cable connect with lighter position :
1, yellow (red) is with "+"
2, black is with "-"
3, lighter plug to the car lighter position,
Red switch control panel delay on power off.

Control schematic

- character:**
- Free server with 1000MB space.
 - Free WEB platform (Base on web browser,no need install) .
 - Group data management ,one time to send out with same speed.
 - Hardware combination with controller and 4G model,stable and economic
 - Stable 4G download speed.Strong signal more than 10 could be 1.5M+ and more than 20 is 5M+
 - Easy software ,from web or to the location is same .
 - Platform could compatible with lan cable,WIFI,4G.



Server side



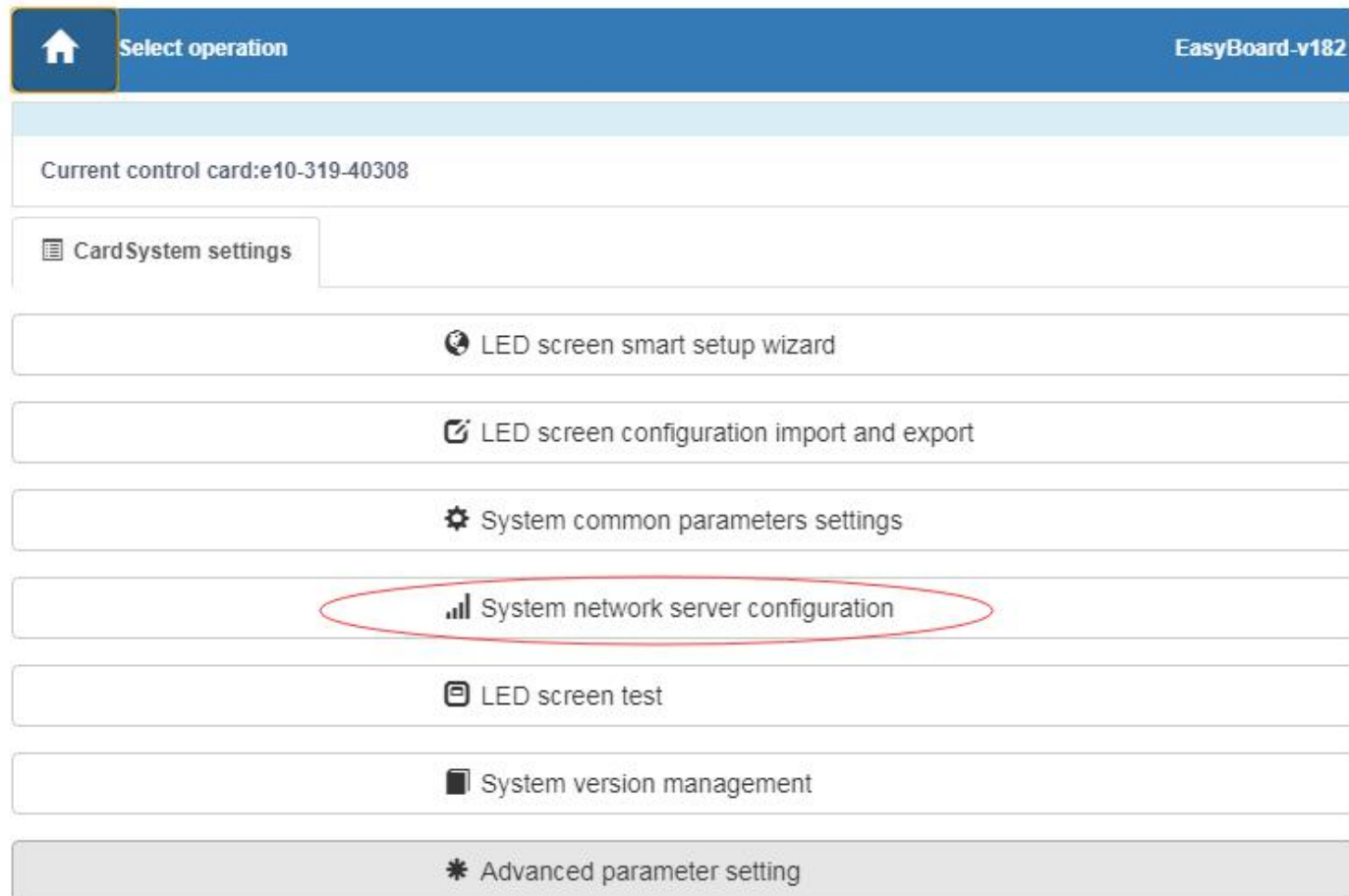
Client side



GPS



network service management



Open EasyBoard software enter cardSystem and select network service management

network service management

The screenshot shows a configuration page for 'EasyBoard-v182' with the title 'Configure The Network And Web servers'. It features a home icon in the top left. The current control card is 'e10-319-40308'. The main configuration area includes a 'Web Server Address' input field, a checked 'Custom' checkbox, and a 'Company ID' input field. A red 'Save' button is positioned below the 'Web Server Address' field. At the bottom, there is a partially visible checkbox labeled 'As Portable Hotspot'.

Web server is www.ledaips.com, input company ID. Notice: This Server could only working aboard and cannot in China. Save after setting.

Wifi setting

Network Settings

WiFi switch ON Open

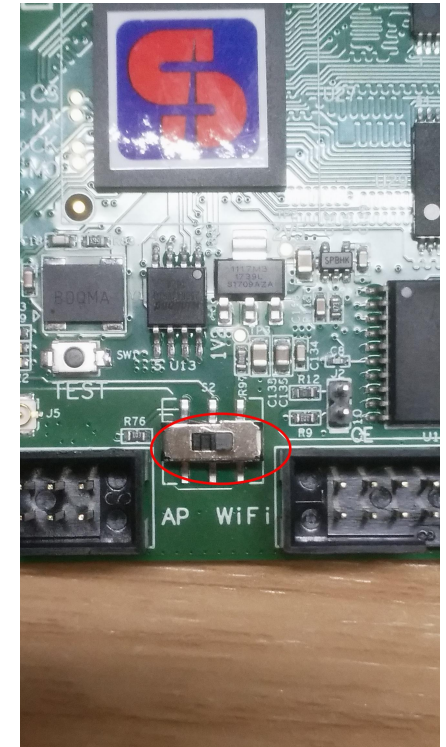
No wifi Custom
password

WiFi Hot Spot:

Scanning WiFi XixunLedSignal intensity 99 ▼


WiFi Password :


APN Settings:



Turn on wifi option, scan the wifi and find the strongest wifi signal, input password and save , then turn on wifi swifth at the controller AP-WIFI botton.

3 (4) G setting

 If you do not know the country code, please click on the "Network Status Detection" view IMSI, the first three digits for the national code

 Network Status Detection

3G switch ON Open

Custom


CountryCode:

APN:

Password:



APN Name:

User:

 Save

Turn on 3G option, select country code: China is 460, check the network status test for IMSI number, the first three number is country code .APN like China Unicom or China Mobile GPRS.APN for China Unicom is 3gnet, and China Mobile is cmnet.save after setting

Single sign programming

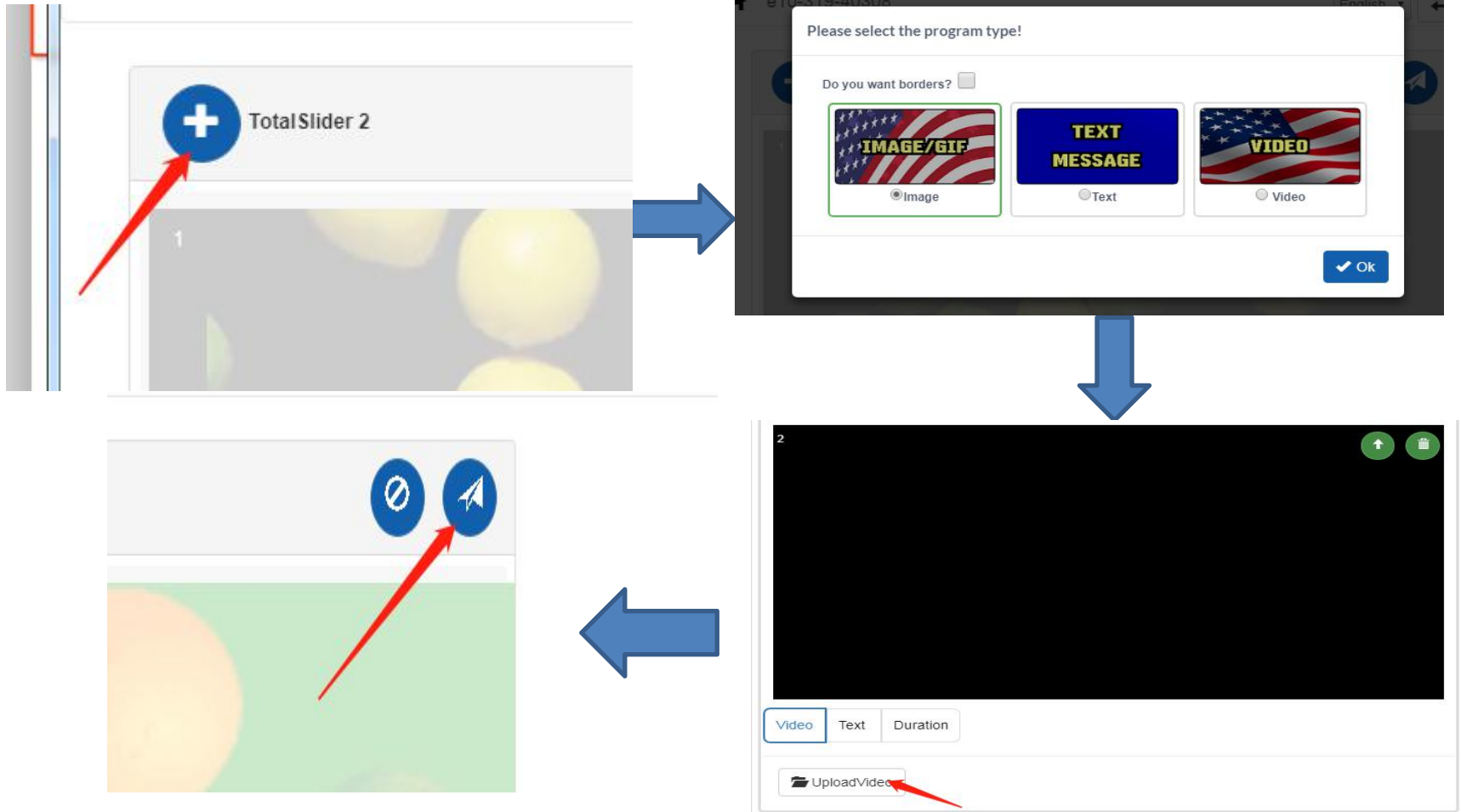
ID	Name	Stand-alone program	ParameterSetting	WidthxHeight(Maxin
e10-319-40308	noname			192x96(54

Program read back successfully!



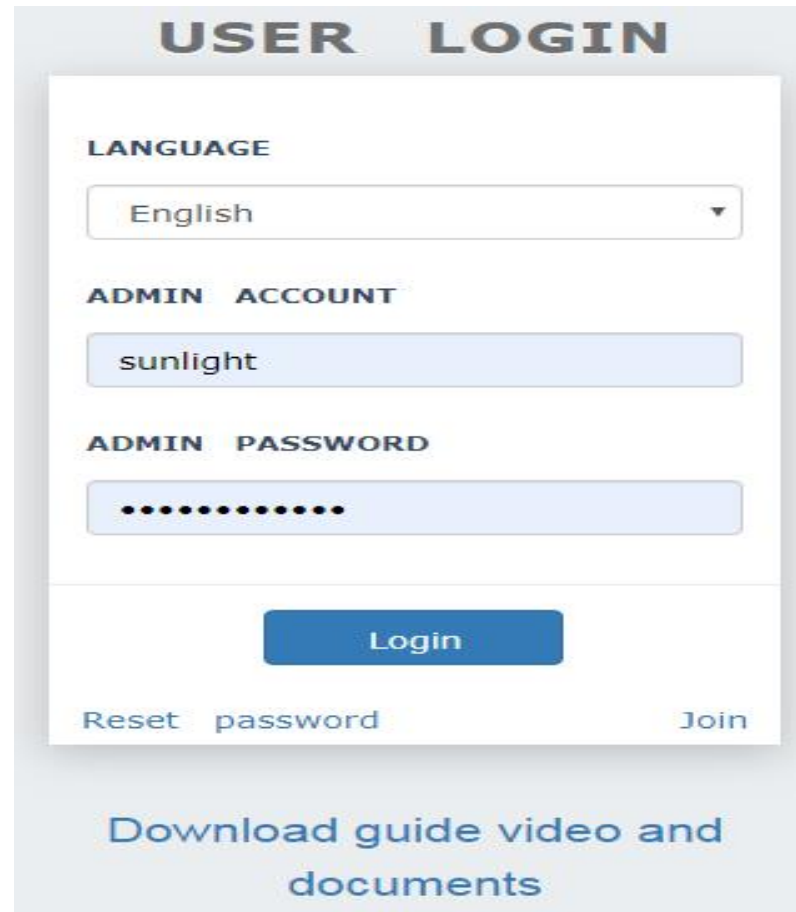
Clik “Stand-alone program” to enter interface,click the red mark as above,and send out the program

Single sign programming



Click '+' for selecting the program and upload , then click the sending mark to send the controller

Sending program



The image shows a web form titled "USER LOGIN". It contains the following elements:

- LANGUAGE**: A dropdown menu with "English" selected.
- ADMIN ACCOUNT**: A text input field containing "sunlight".
- ADMIN PASSWORD**: A password input field with 10 dots.
- Login**: A blue button.
- Reset password**: A link.
- Join**: A link.
- Download guide video and documents**: A link.

Open browser to input www.ledaips.com, log in and learn to send from the course ([The teaching video](#))

Low temperature test

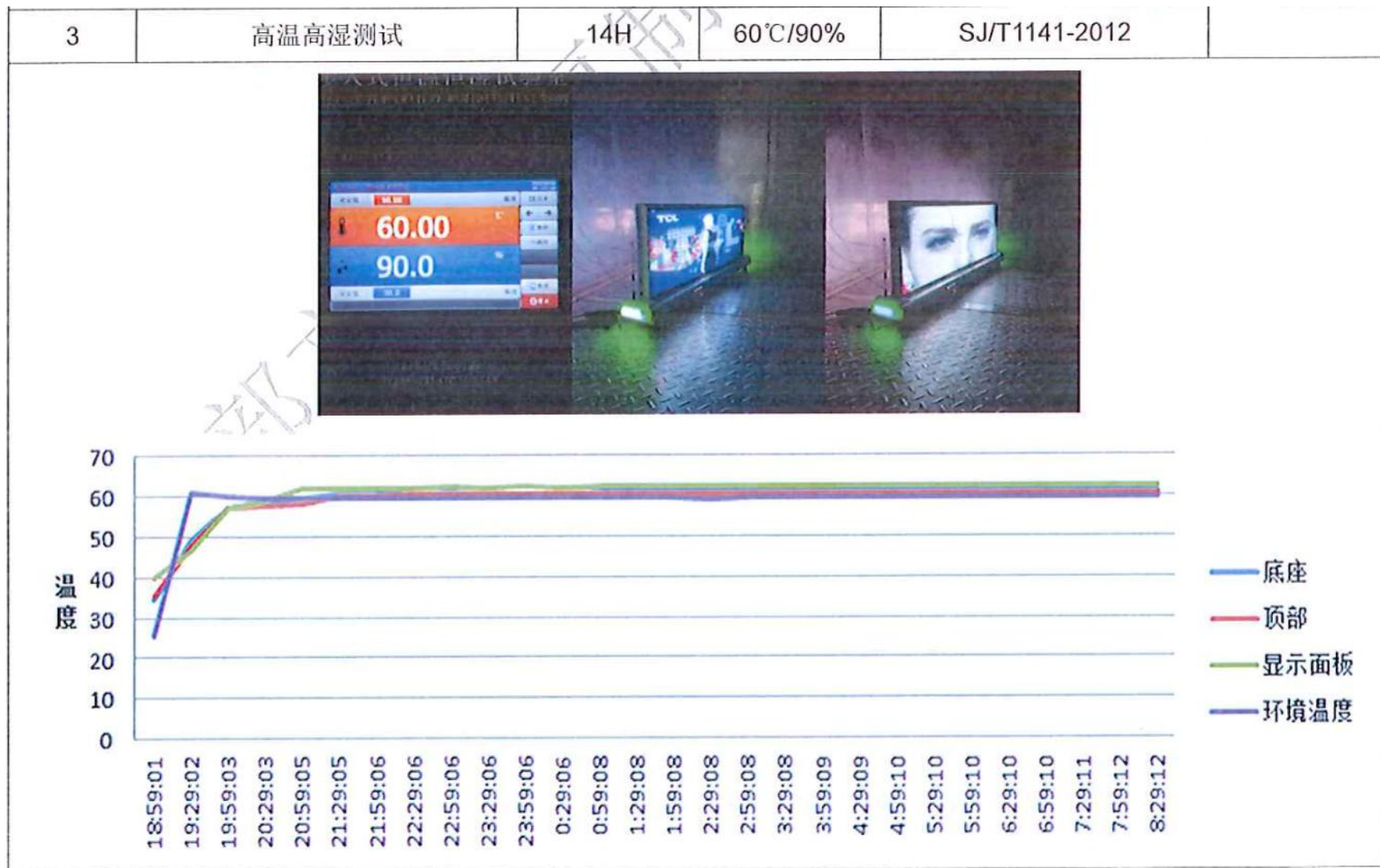
序号	测试项目	时间	测试参数	测试标准	备注
1	低温测试	4H	-40°C	SJ/T1141-2012	



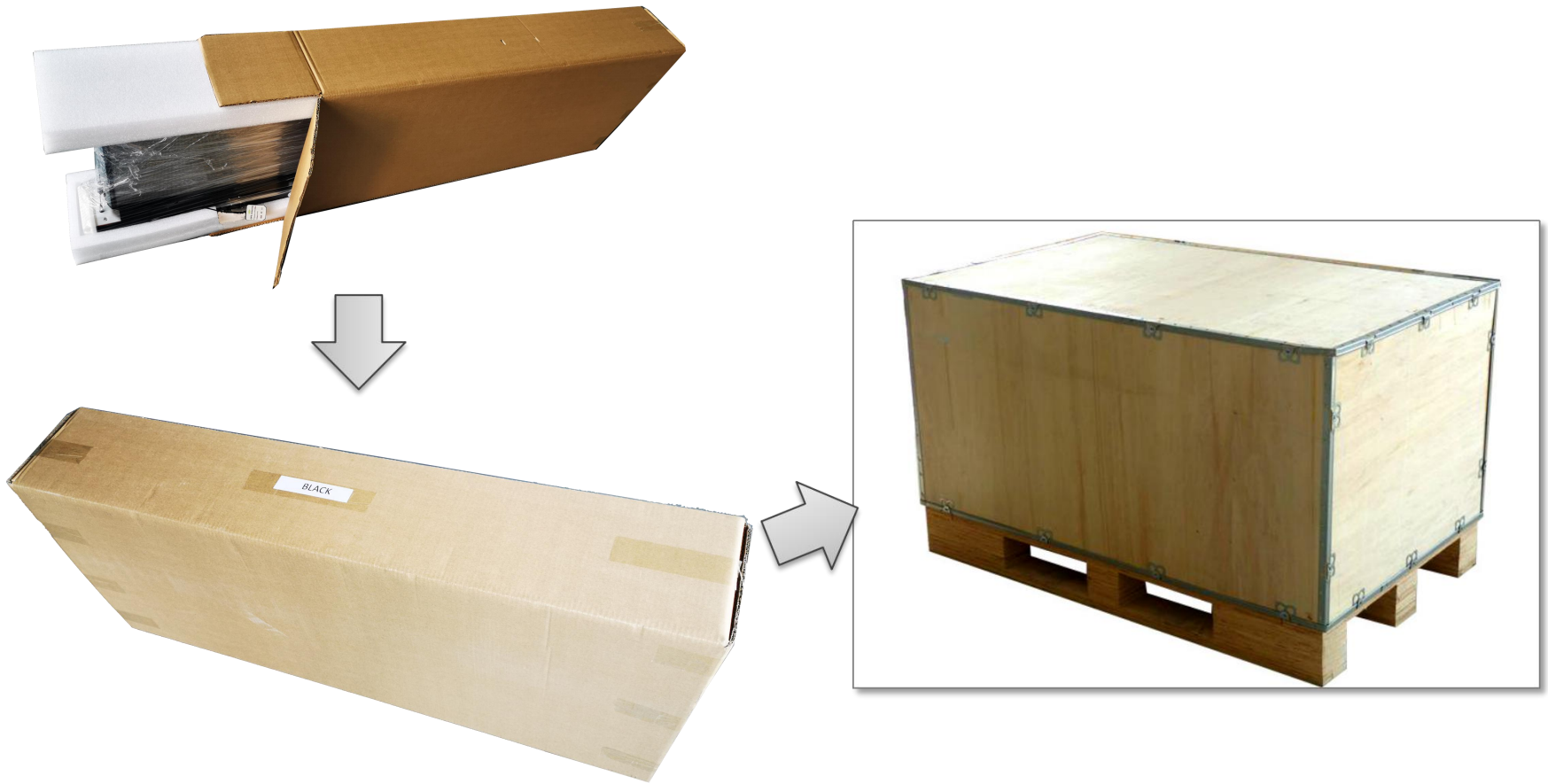
2	低温测试	4H	-20/-10/0°C	SJ/T1141-2012	
---	------	----	-------------	---------------	--



High temperature test



PACKING



Note: carbon size is 1180mm*495mm*225mm.